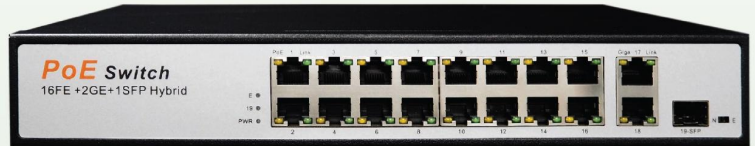


## Features

- ▶ 16x10/100 Standard POE port
- ▶ 2x10/100/1000M Uplink network Port
- ▶ 1x1000M SFP
- ▶ In accordance with IEEE802.3, IEEE802.3u, IEEE802.3ab
- ▶ Internation POE standard IEEE802.3af/at  
Support full port stand detection functionality
- ▶ Support port auto MDI/MDIX
- ▶ 250 meter transmission (Option switch function)



## SPECIFICATION

Model		KP-POE2118
Port	POE	16
	100M-RJ45	16
	1000M-RJ45	2
	1000-SFP	1
Performance	Storage and forward	Support
	Exchange capacity	9.2G
	MAC Address	4K
	POE Standard	IEEE802.3af, IEEE802.3at Single Port 30 W, 250W Max.
Power	Power In	AC 100 ~ 240V 50/60HZ
	Power out	52V
Environment		Working Temperature : 0 ~ 40 C Storage Temperature : - 40 ~ 70 C
		Working Temperature : 10% ~ 90% RH Non-condensation Storage Temperature : 5% ~ 90% RH Non-condensation
Supported Standards and Protocols		IEEE 802.3 Ethernet Medium Access Control Protocol IEEE 802.3i 10BASE-T Ethernet IEEE 802.3u 100BASE-TX Fast Ethernet IEEE 802.3at Ethernet Power Supply Realized Through Ethernet Equipment or Data Line IEEE 802.3at Large Ethernet Power Supply Realized Through Ethernet Equipment or Data Line IEEE 802.3x Flow Control IEEE 802.1q VLAN Bridge operation
Function mode		Standard shared/250 meter transmission
Data Transmission Rate		Ethernet 10Mbps Half Duplex, 20Mbps full Duplex fast Ethernet 100Mbps Half Duplex, 200Mbps full Duplex Gigabit ethernet 2000Mbps full Duplex
Network Medium		10Base-T: 2 pairs of Cat 3 or above UTP/STP (150m) 100Base-TX: 2 pairs of Cat 5 or above UTP/STP (150m) 100Base-TX: 4 pairs of Cat 6 or above UTP/STP (150m) 1000Base-SX: 62m the MMF (2m ~ 550m) or 10m the SMF (2m ~ 5000m)